



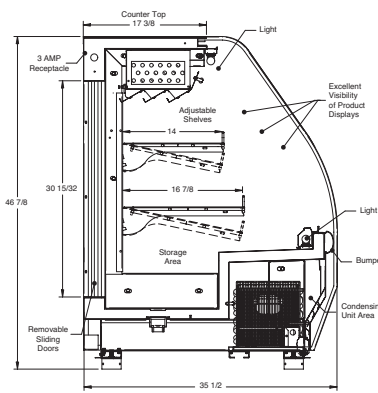
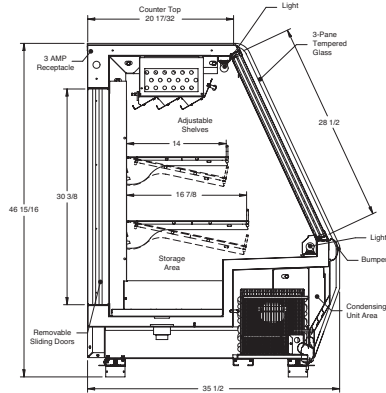
NAV/NAVC

High Volume, Self-Contained Service
Deli Merchandiser

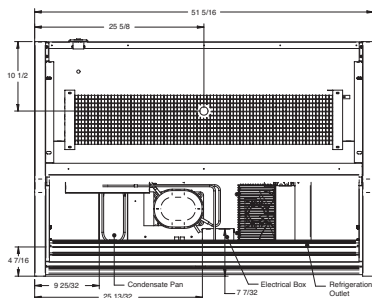
- NAV Straight Glass
- NAVC Curved Glass

High Volume, Self-Contained Service Merchandiser for Deli, Cheese and Prepared Food Applications

NAV - Single Pane Straight Glass Case NAVC - Single Pane Curved Glass Case



Plan View



NAV-4

NAV/C-4,6

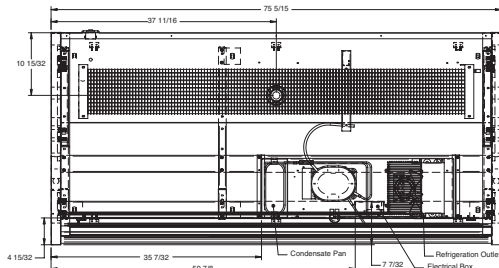


NEMA 5-15P

NAV/C-8



NEMA 5-20P



NAV-6

Model	Exterior Dimensions			Stainless Steel Exterior Top	No. of Rear Doors	Comp. Nom. HP	Voltage Hz/Ph	Run Amps	Fuse Amps	NEMA Plug	Approx. Ship Wt. (lbs)	AC Load (BTU/h)	Energy Consumption (kWh/day)
	L	D	H*										
NAV/C-4	51-5/16"	35-1/2"	45-5/8"	NAV 20-17/32" NAVC 17-3/8"	2	1/3	R-134a 115/60/1	9.2	15	5-15P	505	4280	8.20
NAV/C-6	75-5/16"	35-1/2"	45-5/8"	NAV 20-17/32" NAVC 17-3/8"	3	1/3	R-134a 115/60/1	12.8	15	5-15P	700	4280	11.18
NAV/C-8	99-5/16"	35-1/2"	45-5/8"	NAV 20-17/32" NAVC 17-3/8"	4	1/2	R-134a 115/60/1	15.3	20	5-20P	890	5690	13.40

* Height includes leveling pods.



Husmann refrigerated merchandisers configured for sale for use in the United States meet or surpass the requirements of the DOE 2012 energy efficiency standards.

Advanced Design.

- Front bumper is standard in black.
- Red front bumper available upon request.
- Full size rear glass sliding doors provide viewing and easy access to displayed product.
- One row 13-inch and one row 16-inch wire upper mezzanine shelves.
- NAV and NAVC standard white painted interior and exterior.

Merchandising with Style.

- Large, tempered glass front and interior upper and lower fluorescent lamps provide maximum product visibility.

Smart Construction.

- Standard one-inch leveling pods assist with installation.
- Swivel, locking (2) casters are provided with each merchandiser and may be installed in place of the leveling pods.
- Gravity coil increases product integrity for a longer display time.
- Exterior rear receptacle with 3-amp fuse supplied for connecting a scale to rear of case.
- One-inch interior floor drain is piped to the rear case exterior.
- Standard floor grates protect case bottom and product displays placed in lower storage area.
- Built-in cabinet drain with gas condensate pan for defrost water.

NOTE: These merchandisers are designed for use in stores when temperature and humidity do not exceed 80°F and 55% R.H. Case is designed for holding pre-chilled product only.

NOTE: We reserve the right to change or revise specifications and product design in connection with any feature of our products. Such changes do not entitle the buyer to corresponding changes, improvements, additions, or replacements for equipment previously sold or shipped.

For additional resources and warranties, contact your representative or visit www.husmann.com.

HUSMANN®

Husmann Corporation
12999 St. Charles Rock Rd.
Bridgeton, MO 63044-2483
Ph: 314.291.2000

www.husmann.com