



LTH-68



LTH-45



LTH-18



LTH-8S

Models shown with customer provided graphics.

LTH

Self-Contained, Low Temperature
Glass Door Merchandiser

- Innovative Cassette Refrigeration System

LTH

MORE MERCHANDISING SPACE AND LESS DOWNTIME!

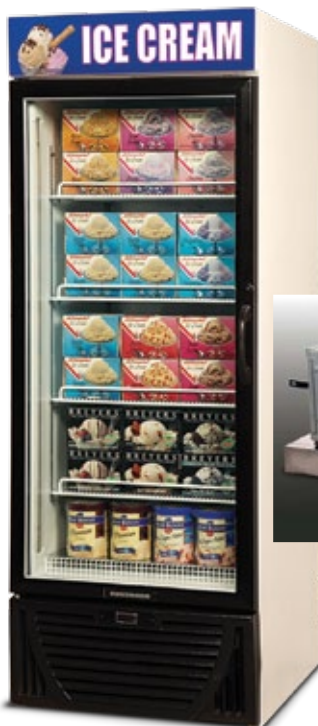
LTH Low Temp Glass Door merchandisers.

The LTH family of low-temperature glass-door merchandisers provides reliable freezer performance, maximum merchandising space and a removable refrigeration cassette for quick, easy service. When placed side-by-side, the LTH models perfectly match Hussmann's medium temp BCH vertical merchandisers, giving your store an attractive, consistent look and feel.

Get more merchandising space – you'll use it.

Because all of the refrigeration components are located in the cassette underneath the case, most of the case interior is available for product display. This gives you more interior space than any competitive unit

to merchandise on the adjustable wire racks. Each rack has a built-in 1-1/2" h product stop. The stainless-steel bottom deck is also built to merchandise product.



Removable refrigeration cassette.

Innovative cassette refrigeration System – A Hussmann exclusive!

All LTH models feature the new proprietary low temperature cassette refrigeration system that is only available from Hussmann. This revolutionary refrigeration system makes service and maintenance of the freezer quick and easy, minimizing service costs and refrigeration downtime.

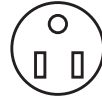
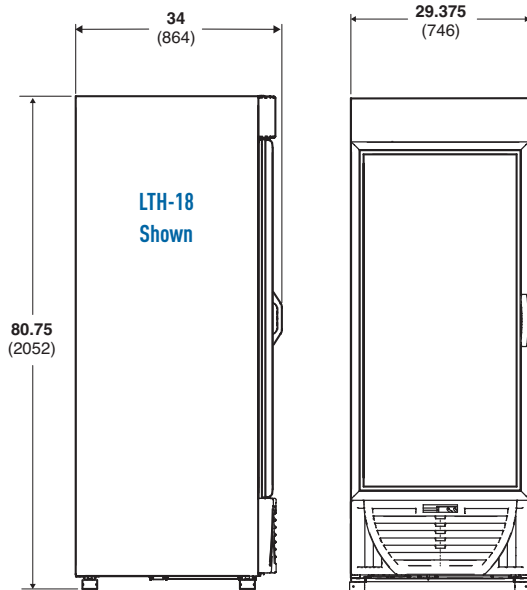
The R-404a cassette refrigeration system includes the compressor, condenser, hot gas condensate pan and many of the components usually found inside the freezer display area, such as evaporator, evaporator fan motors, expansion valve and temperature control.

Save your food (from defrost) and save energy.

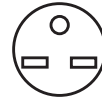
By removing all of the refrigeration components from the actual display area, the cassette system protects displayed product during defrost better than any other system on the market (since the defrost actually takes place outside of the refrigerated display compartment). Product is not exposed to excessive rise in temperature, and pulling the display compartment back down to operating temperatures is quicker. Displayed product lasts longer and case energy consumption is reduced.

Self-Contained, Low Temp Glass Door Merchandiser for Frozen Food and Ice Cream Applications

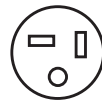
LTH - Low Temperature Glass Door Merchandiser



NEMA 5-15P



NEMA 6-15P



NEMA 6-20P

Optional Accessories.

- Black painted exterior and interior stainless steel cabinet.
- LED light kits.
- Black PTM kits.
- Extra wire display racks with shelf dividers.
- Price tag molding.
- Display baskets (replace shelf).
- Leg and caster kits.
- "Buzzer" alarm feature.
- Reversing condenser fan motor.
- Right-hand door (LTH-8S and LTH-18).
- No heat door (LTH-8S only).

Specifications

| Model | Doors | Width Center Shelf | Depth Center Shelf | Width Left/Right Shelf | Depth Left/Right Shelf | Interior (Usable) | | | Exterior | | | | Cu.Ft. Cap. |
|--------|-------|--------------------|--------------------|------------------------|------------------------|-------------------|-----------|---------|----------|---------|------------|---------|-------------|
| | | | | | | L | D | H | L | D* | D End Only | H** | |
| LTH-8S | 1 | 19.624" | 17.374" | NA | NA | 20-5/8" | 18-1/8" | 40-5/8" | 24-5/8" | 27-5/8" | 23-5/8" | 60-3/4" | 10.6 |
| LTH-18 | 1 | 24-1/5" | 22-3/8" | NA | NA | 25-3/8" | 23-1/2" | 54" | 29-3/8" | 34" | 30" | 80-3/4" | 22.0 |
| LTH-45 | 2 | NA | NA | 25 3/4" | 26" | 48" | 27-1/2" | 56" | 52" | 34" | 30" | 80-3/4" | 41.0 |
| LTH-68 | 3 | 25-3/4" | 26" | 24" | 26" | 73-1/4" | 26-13/16" | 54" | 78-1/4" | 34" | 30" | 80-3/4" | 68.6 |

Electrical

| Model | Unit HP | Voltage Hz/Ph | Run Amps | Fuse Size | Power Cord | NEMA Plug Nos. | Approx. Ship Weight | A/C Load (BTU/h) | Energy Consumption (kWh/day) | Energy Consumption (kWh/day) LED*** |
|--------|---------|---------------|----------|-----------|------------|----------------|---------------------|------------------|------------------------------|-------------------------------------|
| LTH 8S | 1/2 | 115/60/1 | 8.8 | 15-AMP | Yes | 5-15P | 310 | 3760 | 11.44 | 10.84 |
| LTH 18 | 1 | 115/60/1 | 11.5 | 15-AMP | Yes | 5-15P | 535 | 4321 | 18.459 | 17.02 |
| LTH 45 | (2) 1/2 | 208-230/60/1 | 11.7 | 15-AMP | Yes | 6-15P | 1014 | 8696 | 33.74 | 31.82 |
| LTH 68 | (2) 3/4 | 208-230/60/1 | 13.5 | 20-AMP | Yes | 6-20P | 1036 | 13688 | 51.03 | 48.73 |

Note: All LTH cases use R-404A refrigeration.

*Depth dimension "D" includes 1-1/2" for door handle.

**Overall height includes 1-1/2" for leveling pods.

***Estimated numbers.



NOTE: These merchandisers are designed for use in stores when temperature and humidity do not exceed 80°F and 55% R.H. Case is designed for holding pre-frozen product only.

NOTE: We reserve the right to change or revise specifications and product design in connection with any feature of our products. Such changes do not entitle the buyer to corresponding changes, improvements, additions, or replacements for equipment previously sold or shipped.

For additional resources and warranties, contact your representative or visit www.hussmann.com.



Hussmann refrigerated merchandisers configured for sale for use in the United States meet or surpass the requirements of the DOE 2012 energy efficiency standards.

HUSSMANN®

Hussmann Corporation
12999 St. Charles Rock Rd.
Bridgeton, MO 63044-2483
Ph: 314.291.2000

www.hussmann.com